

Bassoon

# Street Echoes

for chamber orchestra

## 1. Piazza Navona, Rome

Charlie Barber

♩ = 180

The musical score for the Bassoon part of "Street Echoes" is written in 3/4 time. It consists of 85 measures, divided into 12 letter-coded sections (A-N). The tempo is marked as ♩ = 180. The score includes various musical notations such as rests, notes, dynamics, and articulation.

**Section A:** Measures 1-7, 7 measures rest.

**Section B:** Measures 8-14, 7 measures rest.

**Section C:** Measures 15-22, 6 measures rest. Dynamics: *p cresc.* to *mf*. Articulation: *a 2*.

**Section D:** Measures 23-28, 6 measures rest. Dynamics: *mf*.

**Section E:** Measures 29-35, 7 measures rest. Dynamics: *mf*. Articulation: *a 2*.

**Section F:** Measures 36-42, 7 measures rest. Dynamics: *mf*.

**Section G:** Measures 43-49, 7 measures rest. Dynamics: *mp* to *mf*. Articulation: *a 2*.

**Section H:** Measures 50-55, 6 measures rest. Dynamics: *mf*.

**Section I:** Measures 56-62, 7 measures rest. Dynamics: *mf*.

**Section J:** Measures 63-69, 7 measures rest. Dynamics: *mf*.

**Section K:** Measures 70-76, 7 measures rest. Dynamics: *mf*.

**Section L:** Measures 77-83, 7 measures rest.

**Section M:** Measures 84-90, 7 measures rest.

**Section N:** Measures 91-97, 7 measures rest.

162

W

3

X

15

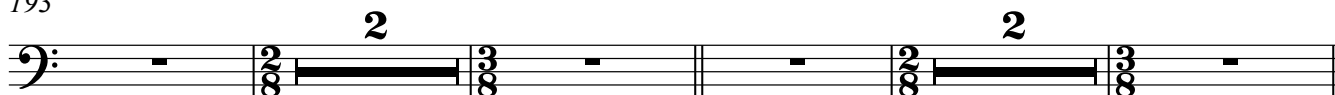
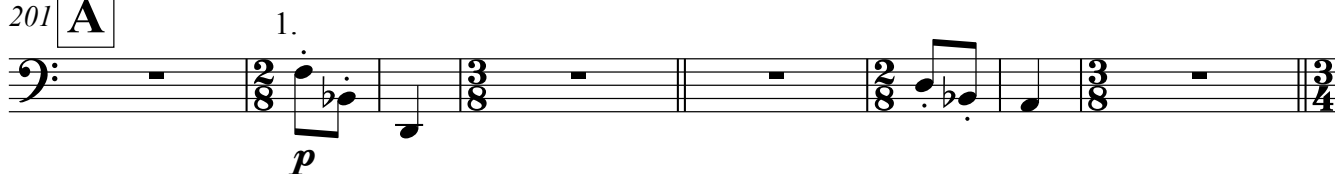
*mf*

**2. Taksim Square, Istanbul****(3 + 2 + 2 + 3)** $\text{♩} = 104$ 

185



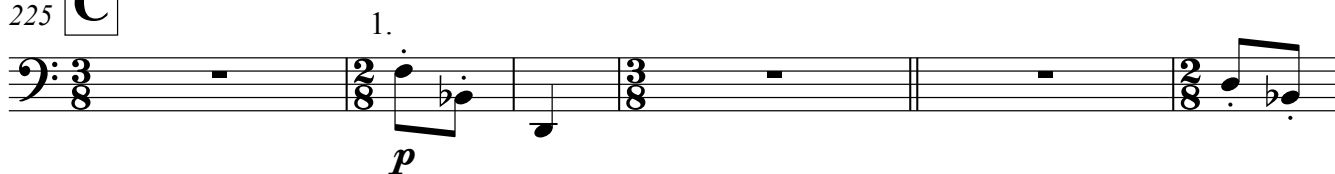
193

201 **A**209 **B** a 2 *cantabile e espress.*

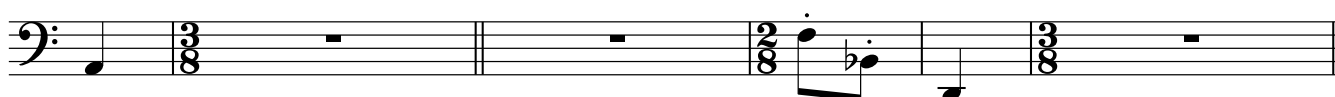
215



220

225 **C**

231



## Charlie Barber - Street Echoes

## Bassoon

237 **D**

*mp* *f*

244 a 2

*mp* *cresc.* *f* *mp*

251

*f* *dim.* *mp*

257 **E**

2 2

265

*p* *mf*

273

*p* *mf*

281 **F**

1. *p*

289

*p*

Bassoon

297 **G**

*p* *mf*

305 a 2

*mf*

309

313 **H**

*p*

321

329 **I**

338 1.

*p* *mp*

348 **J**

357

## Charlie Barber - Street Echoes

## Bassoon

**K** *cantabile e espress.*

365 *a 2*  
*f*

371  
*mf*

**L**

378  
*f*

386 *a 2*  
*ff*

392  
*ff*

397 **M**

405  
*pp*

412  
*p*

421 *Rit.*

The musical score for the Bassoon part of 'Street Echoes' by Charlie Barber. The score is written for a single staff and consists of eight systems of music. The first system (measures 365-370) is in 3/4 time, marked 'cantabile e espress.' and 'f'. The second system (measures 371-377) is in 3/4 time, marked 'mf'. The third system (measures 378-385) is in 3/4 time, marked 'f'. The fourth system (measures 386-391) is in 3/4 time, marked 'ff'. The fifth system (measures 392-396) is in 3/4 time, marked 'ff'. The sixth system (measures 397-404) is in 3/4 time, marked 'pp'. The seventh system (measures 405-411) is in 3/4 time, marked 'p'. The eighth system (measures 412-420) is in 3/4 time, marked 'Rit.'. The score includes various musical notations such as notes, rests, beams, and dynamic markings.

Bassoon

3. People's Square, Shanghai

428  $\text{♩} = 75$

**A**

2

2

432 **B**

*mf*

434 **C**

*mf*

**D**

2

438 **E**

*mf*

**F**

*mf*

442 **G**

2

1. *mp*

2.

446 **H**

*f*

**I**

3

*mf*

452 **J**

*p*

a 2

*mp* *cresc.* *mf*

454 **K**

*f*

a 2

*mp* *cresc.* *mf*

## Charlie Barber - Street Echoes

## Bassoon

458 **L** *mf* *mp cresc.* *mf* a 2

462 **M** 2 **N** *f*

466 **O** 2 **P** 2

470 **Q** *f* *mf cresc.* *f* a 2

472 **R** 1. *mf* 2. **S** 10

484 **T** 2 1. *mf* 2.

488 **U** *f*

490 **V** a 2 *f* *cresc.*

492 *ff* *cresc.* *sff*